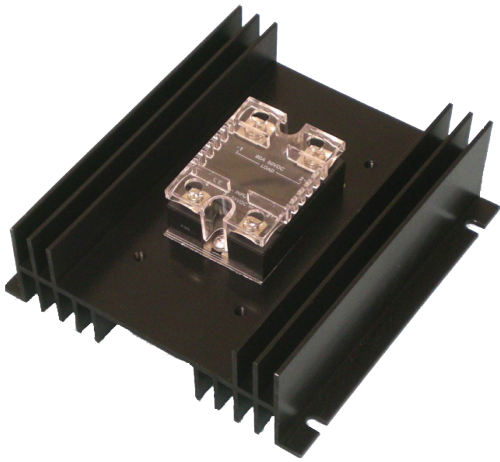


CBM4070

Current Booster Module



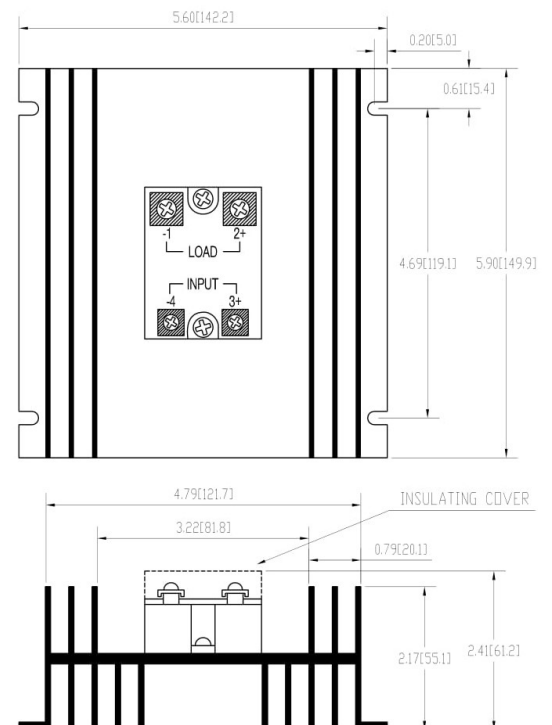
External High Current Switch For Solar Boost Charge Controller Auxiliary Output

The Current Booster Module (CBM) is an optically isolated high current MOSFET switch. The CBM can be used to greatly increase the load switching capability of Solar Boost charge controllers with load control outputs. The charge controller load control output serves as the input control signal to the CBM and the CBM provides all high current switching for the load.

The CBM output turns on when a 3 – 32VDC signal is present on its input terminals. Input to output optical isolation allows the output to serve as either a low side switch or high side switch. The CBM can also serve as a PWM power driver for the Solar Boost 3024 DUO-Option wind/hydroelectric diversion charge control system. Up to 70 amps can be switched in a DC on/off application or up to 40 amps in a 3024 DUO-Option PWM diversion application.

Product Features

- Greatly increases load drive capability of Solar Boost Charge Controller load output
- Switches 70A DC or 40A DUO-Option PWM



Specifications:

CBM4070

Input ON voltage:	6 - 32VDC
Input ON current:	25mA
Switched voltage:	35VDC continuous, 50VDC peak
Max switched current at 40°C:	70A DC on/off 40A Duo-Option 100Hz PWM
Max surge current:	200A for 10mS
Shipping weight:	0.73kg
Warranty:	Full 1 year limited warranty